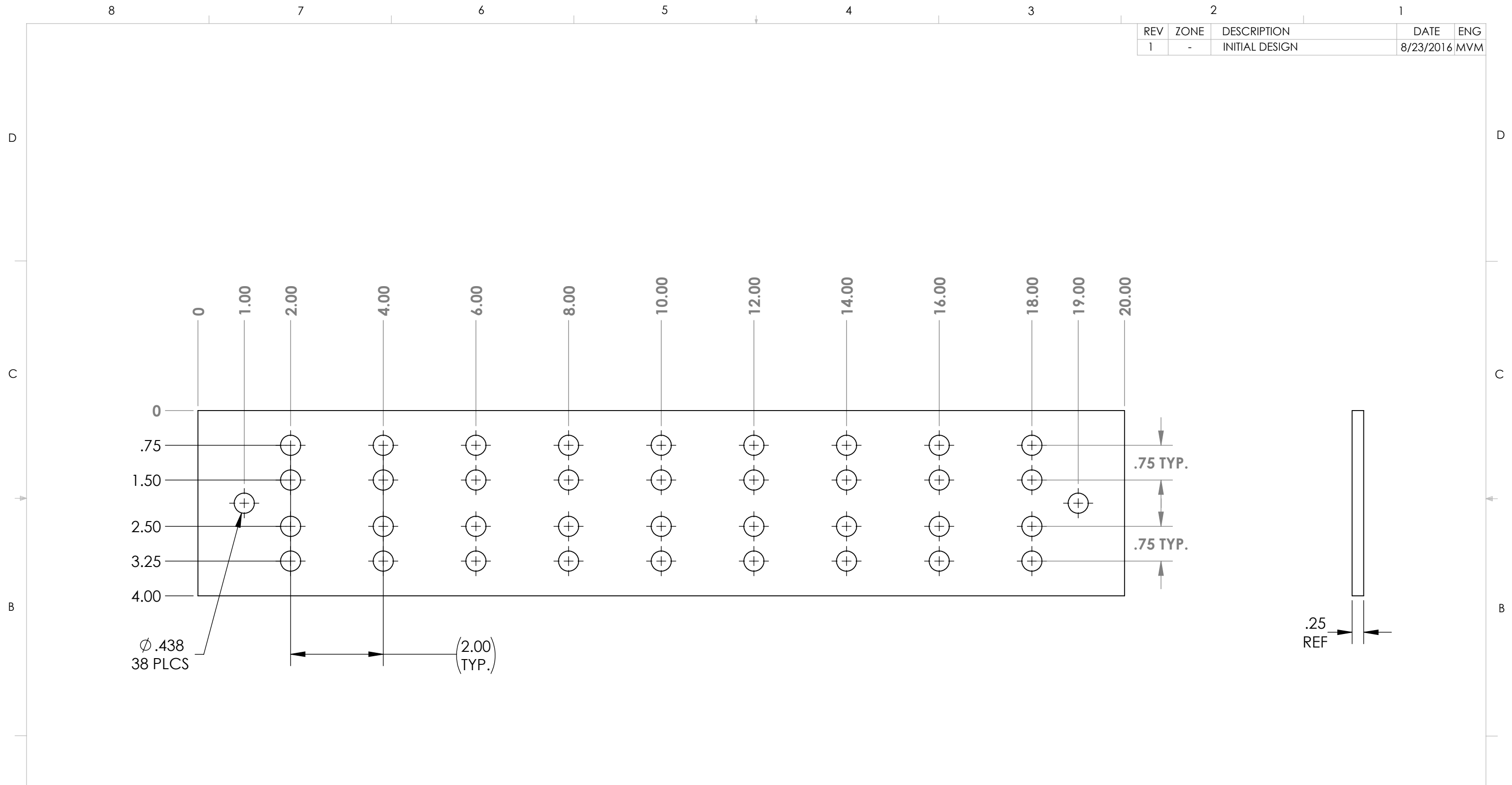


REV	ZONE	DESCRIPTION	DATE	ENG
1	-	INITIAL DESIGN	8/23/2016	MVM



NOTES:
MATERIAL: .25" THICK COPPER C110
REMOVE SHARP EDGES & BURRS
FINISH: NONE

PROPRIETARY AND CONFIDENTIAL
THE INFORMATION CONTAINED IN THIS DRAWING IS THE SOLE PROPERTY OF STORM POWER COMPONENTS. ANY REPRODUCTION IN PART OR AS A WHOLE WITHOUT THE WRITTEN PERMISSION OF STORM POWER COMPONENTS IS PROHIBITED.

UNLESS OTHERWISE SPECIFIED:		NAME	DATE
DIMENSIONS ARE IN INCHES		DRAWN	M. MOLINA
TOLERANCES:		CHECKED	-
ANGULAR: BEND ±1°		ENG APPR.	
ONE PLACE DECIMAL ±.1		MFG APPR.	
TWO PLACE DECIMAL ±.03		Q.A.	
THREE PLACE DECIMAL ±.005			
COMMENTS:		INTERPRET GEOMETRIC TOLERANCES PER: ASME Y14.5-1994	
SCGB-10 BUSBAR		SIZE	B
MATERIAL: 110 COPPER		3RD ANGLE PROJECTION	
FINISH: -		DO NOT SCALE DRAWING	

STORM
POWER COMPONENTS

TITLE: **BUSBAR**

DWG. NO. **SCGB-10** REV **1**

SCALE: 1:2 WEIGHT: 5.97 SHEET 1 OF 1