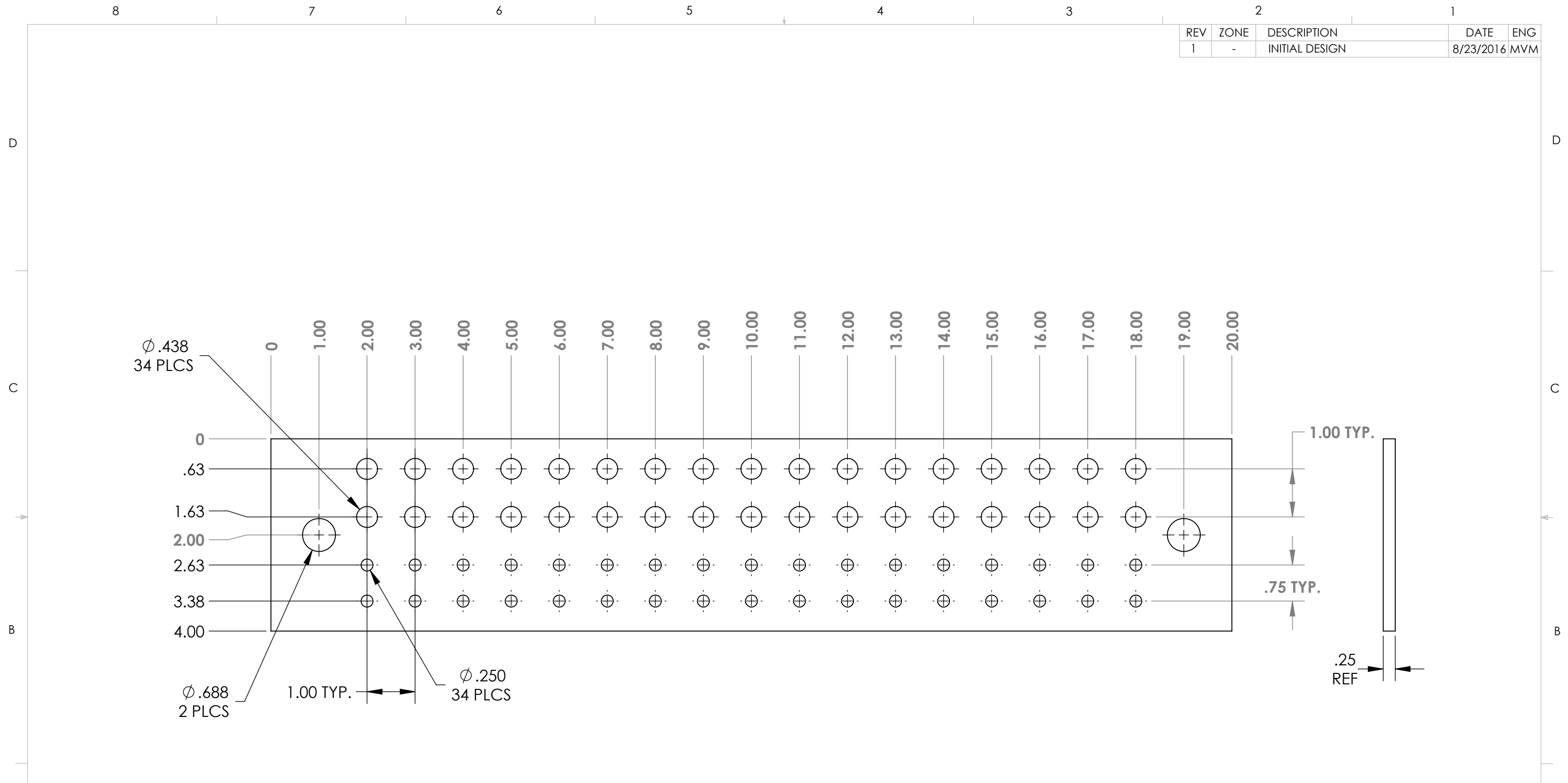


REV	ZONE	DESCRIPTION	DATE	ENG
1	-	INITIAL DESIGN	8/23/2016	MVM



NOTES:
MATERIAL: .25" THICK COPPER C110
REMOVE SHARP EDGES & BURRS
FINISH: NONE

PROPRIETARY AND CONFIDENTIAL
THE INFORMATION CONTAINED IN THIS DRAWING IS THE SOLE PROPERTY OF STORM POWER COMPONENTS. ANY REPRODUCTION IN PART OR AS A WHOLE WITHOUT THE WRITTEN PERMISSION OF STORM POWER COMPONENTS IS PROHIBITED.

UNLESS OTHERWISE SPECIFIED:		NAME	DATE
DIMENSIONS ARE IN INCHES		DRAWN	M. MOLINA
TOLERANCES:		CHECKED	-
ANGULAR: BEND ±1°		ENG APPR.	
ONE PLACE DECIMAL ±.1		MFG APPR.	
TWO PLACE DECIMAL ±.03		Q.A.	
THREE PLACE DECIMAL ±.005			
COMMENTS:		INTERPRET GEOMETRIC TOLERANCES PER: ASME Y14.5-1994	
SCGB-9 BUSBAR		SIZE	B
MATERIAL		3RD ANGLE PROJECTION	
110 COPPER			
FINISH		DO NOT SCALE DRAWING	
-			

 STORM POWER COMPONENTS		TITLE:	
		BUSBAR	
DWG. NO.		REV	
SCGB-9		1	
SCALE: 1:2	WEIGHT: 5.83	SHEET 1 OF 1	