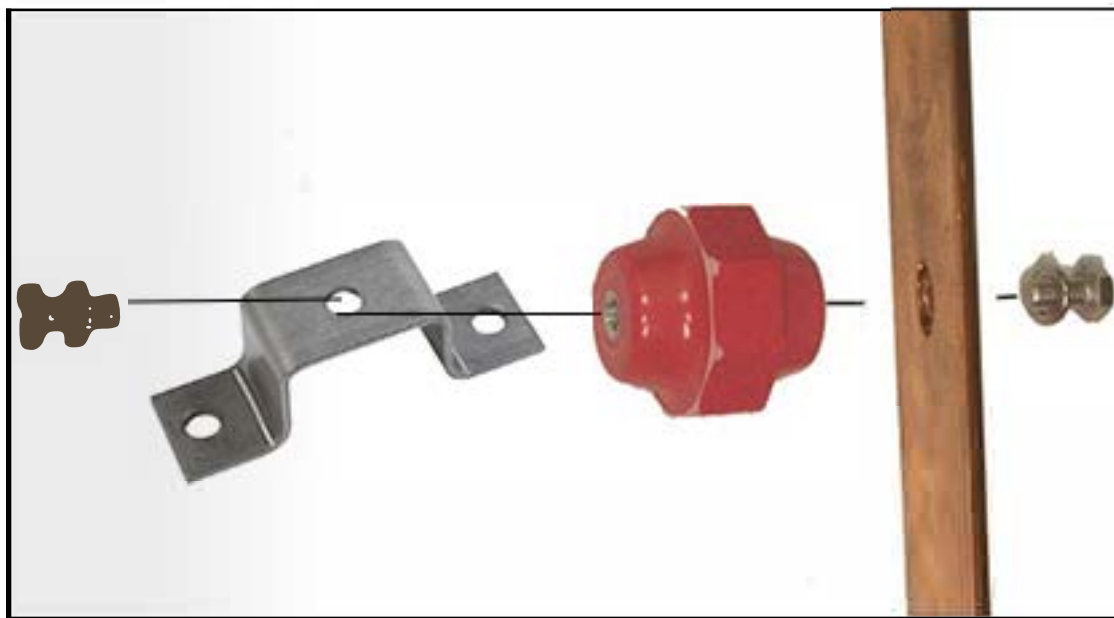
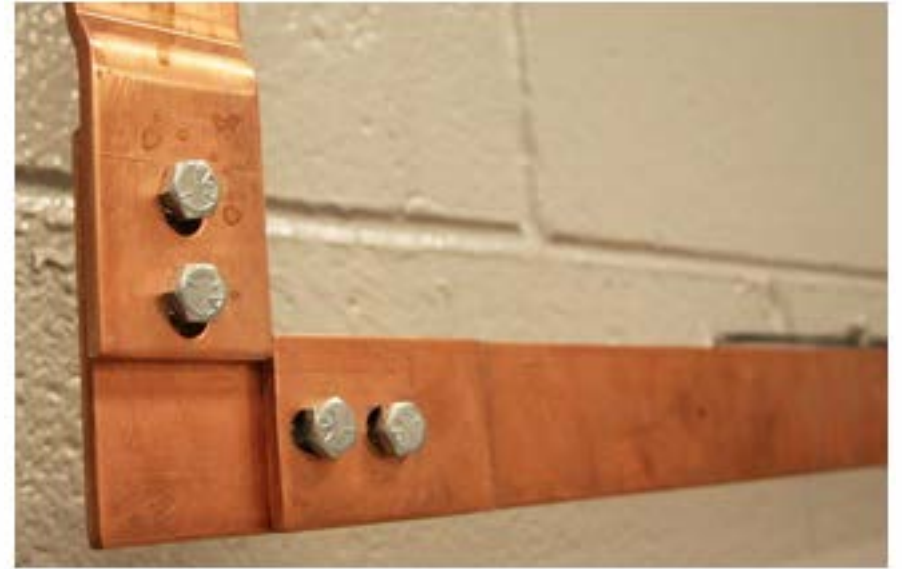
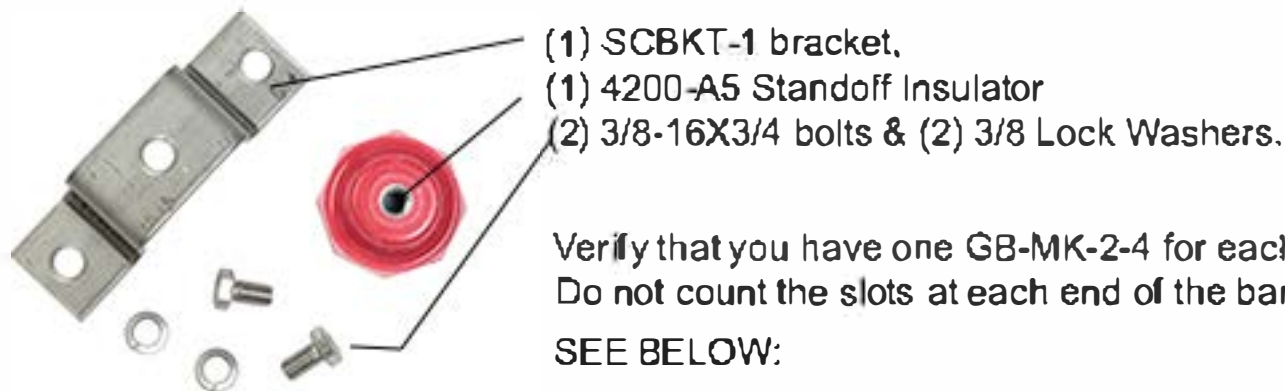


INSTALLATION GUIDE

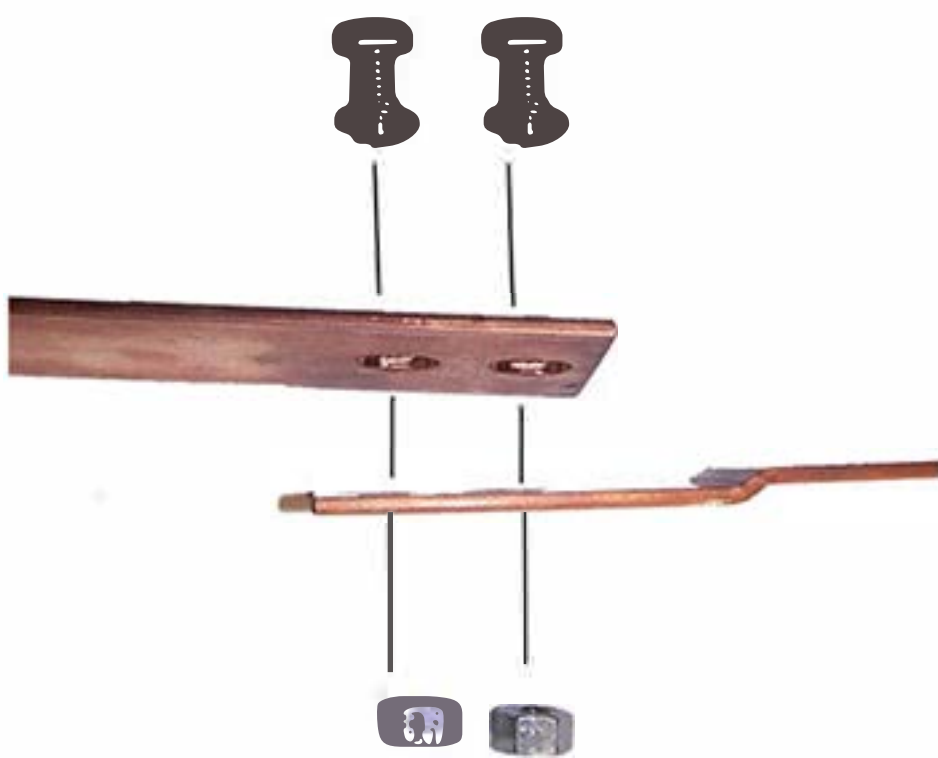
1. Remove perimeter ground bars and other components from packing and verify that all items ordered are present.
2. The G B-C U-0250-2000 and 4000 series mounts (provided with the installation kit) use GB-MK-2-4 in slots provided.

√ **GB-MK-2-4 includes**



How to mount splices and elbows using 2 & 4 single or spiced connectors:

3. The G B-C U-0250-2000 series connects-end to-end to splice plates and elbows using GB-BS-2 bolt set. Each set includes (2) 3/8-16X3/4 Bolts, (2) 3/8-16 Nuts, (2) 3/8 Lock Washers. Verify that you have one GB-BS-2 for each junction. See below.
4. The G B-C U-0250-4000 series connects end to end to splices and elbows using G B-BS-4 bolt set. Each set includes (4) 3/8-16X3/4 Bolts, (4) 3/8-16 Nuts, and (4) 3/8 Lock Washers. Verify that you have one GB-BS-4 for each junction. See below.



6. Place assembly in the desired location on the mounting surface, making sure the bar is level and in position to attach the next bar, splice or elbow. Mark and drill the mounting holes using the proper bit (not supplied) for the mounting surface type. Attach the Perimeter ground bar to the mounting surface with the proper fastener (not supplied) for the mounting surface. Repeat this procedure for each ground bar needed.
7. Connect the ground bars end to end using the G B-BS-2 for 2000 series ground bars or GB-BS-4 for 4000 series ground bars. These same bolt kits are used to attach splice plates and elbows to the ground bars. Place a bolt through the ground bar and into the Perimeter (mating) ground bar, splice plate or elbow. Place a lock washer on the bolt and thread on the nut.
8. **Ground the perimeter assembly following NEC and local codes. Maximum torque: 30 ft. lbs.**