



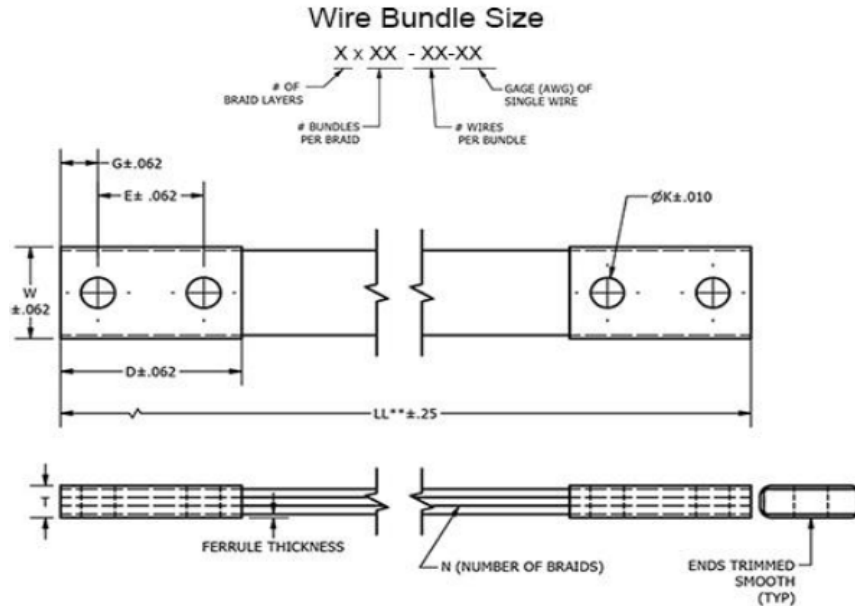
FLEXBRAID SPECIFICATIONS and PRICING

(Please see illustration below for reference)

Part Number	LL Length	Pad Dimensions			Hole Diameter and Spacing			Price
		W Width	T Thick	D Length	E Spacing	K Dia.	G Edge	
Single Braid:								
190 AMP								
SC-BD12	12	1.190	0.130	2.50	1.000	0.410	0.620	\$55.86
SC-BD12N	12	1.190	0.130	3.00	1.750	0.560	0.620	\$55.86
SC-BD18	18	1.190	0.130	2.50	1.000	0.410	0.620	\$61.40
SC-BD18N	18	1.190	0.130	3.00	1.750	0.560	0.620	\$61.40
SC-BD24	24	1.190	0.130	2.50	1.000	0.410	0.620	\$66.93
SC-BD24N	24	1.190	0.130	3.00	1.750	0.560	0.620	\$66.93
SC-BD36	36	1.190	0.130	2.50	1.000	0.410	0.620	\$78.01
SC-BD36N	36	1.190	0.130	3.00	1.750	0.560	0.620	\$78.01
SC-BD48	48	1.190	0.130	2.50	1.000	0.410	0.620	\$89.09
SC-BD48N	48	1.190	0.130	3.00	1.750	0.560	0.620	\$89.09
Two Braids:								
380 AMP								
SC-B2D12	12	1.190	0.210	2.50	1.000	0.410	0.620	\$71.97
SC-B2D12N	12	1.190	0.210	3.00	1.750	0.560	0.620	\$71.97
SC-B2D18	18	1.190	0.210	2.50	1.000	0.410	0.620	\$83.05
SC-B2D18N	18	1.190	0.210	3.00	1.750	0.560	0.620	\$83.05
SC-B2D24	24	1.190	0.210	2.50	1.000	0.410	0.620	\$94.13
SC-B2D24N	24	1.190	0.210	3.00	1.750	0.560	0.620	\$94.13
SC-B2D36	36	1.190	0.210	2.50	1.000	0.410	0.620	\$116.29
SC-B2D36N	36	1.190	0.210	3.00	1.750	0.560	0.620	\$116.29
SC-B2D48	48	1.190	0.210	2.50	1.000	0.410	0.620	\$138.44
SC-B2D48N	48	1.190	0.210	3.00	1.750	0.560	0.620	\$138.44
Three Braids:								
470 AMP								
SC-B3D12	12	1.190	0.270	2.50	1.000	0.410	0.750	\$85.82
SBCB3D12N	12	1.190	0.270	3.00	1.750	0.560	0.620	\$85.82
SC-B3D18	18	1.190	0.270	2.50	1.000	0.410	0.750	\$102.44
SC-B3D18N	18	1.190	0.270	3.00	1.750	0.560	0.620	\$102.44
SC-B3D24	24	1.190	0.270	2.50	1.000	0.410	0.750	\$119.06
SC-B3D24N	24	1.190	0.270	3.00	1.750	0.560	0.620	\$119.06
SC-B3D36	36	1.190	0.270	2.50	1.000	0.410	0.750	\$152.29
SC-B3D36N	36	1.190	0.270	3.00	1.750	0.560	0.620	\$152.29
SC-B3D48	48	1.190	0.270	2.50	1.000	0.410	0.750	\$185.53
SC-B3D48N	48	1.190	0.270	3.00	1.750	0.560	0.620	\$185.53
Four Braids:								
600 AMP								
SC-B4D12	12	1.190	0.390	2.50	1.000	0.410	0.750	\$100.53
SC-B4D12N	12	1.190	0.390	3.00	1.750	0.560	0.620	\$100.53
SC-B4D18	18	1.190	0.390	2.50	1.000	0.410	0.750	\$122.69
SC-B4D18N	18	1.190	0.390	3.00	1.750	0.560	0.620	\$122.69
SC-B4D24	24	1.190	0.390	2.50	1.000	0.410	0.750	\$144.85
SC-B4D24N	24	1.190	0.390	3.00	1.750	0.560	0.620	\$144.85
SC-B4D36	36	1.190	0.390	2.50	1.000	0.410	0.750	\$189.16

SC-B4D36N	36	1.190	0.390	3.00	1.750	0.560	0.620	\$189.16
SC-B4D48	48	1.190	0.390	2.50	1.000	0.410	0.750	\$233.48
SC-B4D48N	48	1.190	0.390	3.00	1.750	0.560	0.620	\$233.48

AMP RATING WILL VARY WITH AMBIENT CONDITIONS, ORIENTATION OF THE BRAID AND OTHER SERVICE CONDITIONS.
ALL SIZES ARE LISTED TO UL 467 GROUNDING AND BONDING EQUIPMENT STANDARDS



1-800-394-4804

BE Series

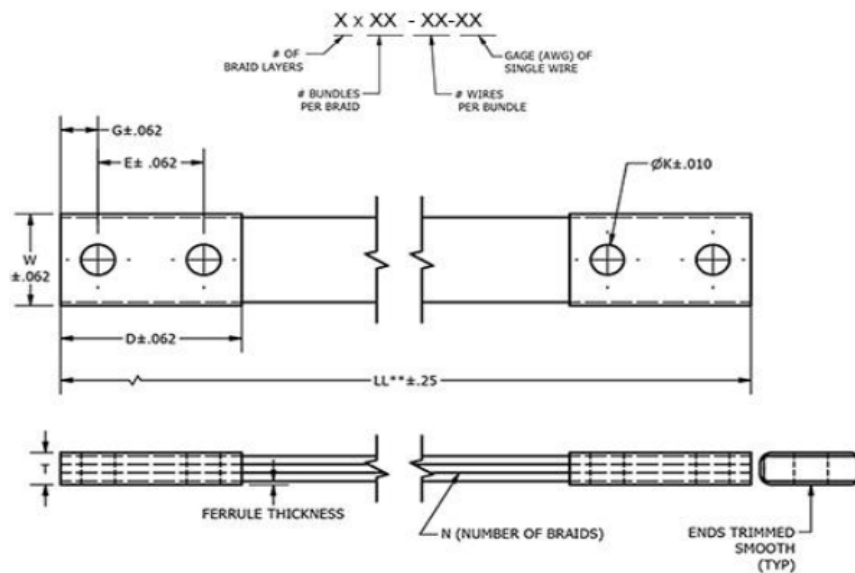
FLEXBRAID SPECIFICATIONS and PRICING								
<i>(Please see illustration below for reference)</i>								
Part Number	LL Length	Pad Dimensions			Hole Diameter and Spacing			Price
		W Width	T Thick	D Length	E Spacing	K Dia.	G Edge	
Single Braid:								
340 AMP								
SC-BE12	12	1.250	0.210	2.50	1.000	0.410	0.750	\$67.24
SC-BE12N	12	1.250	0.210	3.00	1.750	0.560	0.620	\$67.24
SC-BE18	18	1.250	0.210	2.00	1.000	0.410	0.750	\$76.43
SC-BE18N	18	1.250	0.210	3.00	1.750	0.560	0.620	\$76.43
SC-BE24	24	1.250	0.210	2.50	1.000	0.410	0.750	\$85.61
SC-BE24N	24	1.250	0.210	3.00	1.750	0.560	0.620	\$85.61
SC-BE36	36	1.250	0.210	2.50	1.000	0.410	0.750	\$103.99
SC-BE36N	36	1.250	0.210	3.00	1.750	0.560	0.620	\$103.99
SC-BE48	48	1.250	0.210	2.50	1.000	0.410	0.750	\$122.36
SC-BE48N	48	1.250	0.210	3.00	1.750	0.560	0.620	\$122.36
Two Braids:								
530 AMP								
SC-B2E12	12	1.250	0.350	2.50	1.000	0.410	0.750	\$91.07
SC-B2E12N	12	1.250	0.350	3.00	1.750	0.560	0.620	\$91.07
SC-B2E18	18	1.250	0.350	2.50	1.000	0.410	0.750	\$109.44
SC-B2E18N	18	1.250	0.350	3.00	1.750	0.560	0.620	\$109.44

SC-B2E24	24	1.250	0.350	2.50	1.000	0.410	0.750	\$127.81
SC-B2E24N	24	1.250	0.350	3.00	1.750	0.560	0.620	\$127.81
SC-B2E36	36	1.250	0.350	2.50	1.000	0.410	0.750	\$164.56
SC-B2E36N	36	1.250	0.350	3.00	1.750	0.560	0.620	\$164.56
SC-B2E48	48	1.250	0.350	2.50	1.000	0.410	0.750	\$201.30
SC-B2E48N	48	1.250	0.350	3.00	1.750	0.560	0.620	\$201.30
Three Braids:								
700 AMP								
SC-B3E12	12	1.250	0.580	2.50	1.000	0.410	0.750	\$129.26
SC-B3E12N	12	1.250	0.580	3.00	1.750	0.560	0.620	\$131.53
SC-B3E18	18	1.250	0.580	2.50	1.000	0.410	0.750	\$156.82
SC-B3E18N	18	1.250	0.580	3.00	1.750	0.560	0.620	\$159.09
SC-B3E24	24	1.250	0.580	2.50	1.000	0.410	0.750	\$184.38
SC-B3E24N	24	1.250	0.580	3.00	1.750	0.560	0.620	\$186.65
SC-B3E36	36	1.250	0.580	2.50	1.000	0.410	0.750	\$239.50
SC-B3E36N	36	1.250	0.580	3.00	1.750	0.560	0.620	\$241.76
SC-B3E48	48	1.250	0.580	2.50	1.000	0.410	0.750	\$294.62
SC-B3E48N	48	1.250	0.580	3.00	1.750	0.560	0.620	\$296.88
Four Braids:								
875 AMP								
SC-B4E12	12	1.250	0.800	2.50	1.000	0.410	0.750	\$152.31
SC-B4E12N	12	1.250	0.800	3.00	1.750	0.560	0.620	\$154.58
SC-B4E18	18	1.250	0.800	2.50	1.000	0.410	0.750	\$189.06
SC-B4E18N	18	1.250	0.800	3.00	1.750	0.560	0.620	\$191.32
SC-B4E24	24	1.250	0.800	2.50	1.000	0.410	0.750	\$225.80
SC-B4E24N	24	1.250	0.800	3.00	1.750	0.560	0.620	\$228.07
SC-B4E36	36	1.250	0.800	2.50	1.000	0.410	0.750	\$299.29
SC-B4E36N	36	1.250	0.800	3.00	1.750	0.560	0.620	\$301.56
SC-B4E48	48	1.250	0.800	2.50	1.000	0.410	0.750	\$372.79
SC-B4E48N	48	1.250	0.800	3.00	1.750	0.560	0.620	\$375.05

AMP RATING WILL VARY WITH AMBIENT CONDITIONS, ORIENTATION OF THE BRAID AND OTHER SERVICE CONDITIONS.
ALL SIZES ARE LISTED TO UL 467 GROUNDING AND BONDING EQUIPMENT STANDARDS



Wire Bundle Size





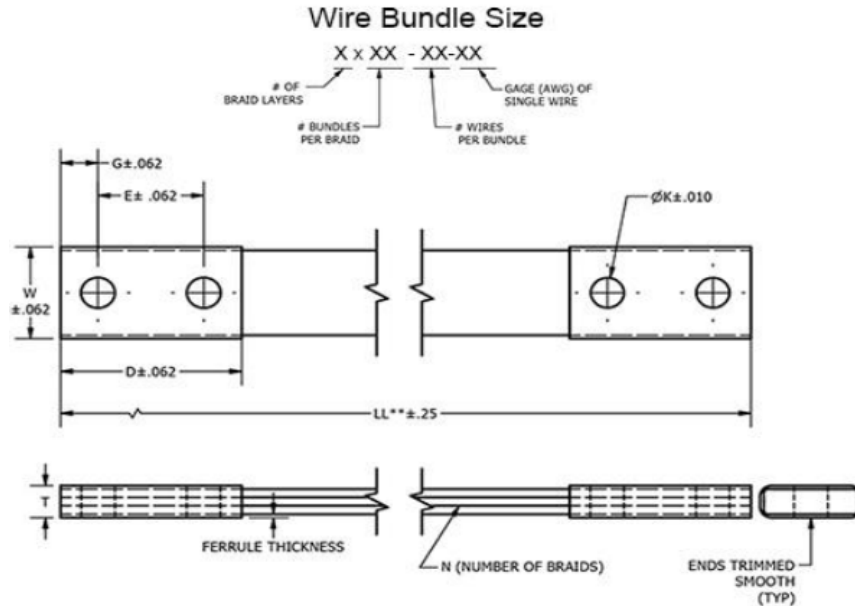
FLEXBRAID SPECIFICATIONS and PRICING

(Please see illustration below for reference)

Part Number	LL Length	Pad Dimensions			Hole Diameter and Spacing			Price
		W Width	T Thick	D Length	E Spacing	K Dia.	G Edge	
Single Braid:								
375 AMP								
SC-BF12	12	1.380	0.280	2.50	1.000	0.410	0.750	\$71.64
SC-BF12N	12	1.380	0.280	3.00	1.750	0.560	0.620	\$71.64
SC-BF18	18	1.380	0.280	2.50	1.000	0.410	0.750	\$82.54
SC-BF18N	18	1.380	0.280	3.00	1.750	0.560	0.620	\$82.54
SC-BF24	24	1.380	0.280	2.50	1.000	0.410	0.750	\$93.45
SC-BF24N	24	1.380	0.280	3.00	1.750	0.560	0.620	\$93.45
SC-BF36	36	1.380	0.280	2.50	1.000	0.410	0.750	\$115.26
SC-BF36N	36	1.380	0.280	3.00	1.750	0.560	0.620	\$115.26
SC-BF48	48	1.380	0.280	2.50	1.000	0.410	0.750	\$137.07
SC-BF48N	48	1.380	0.280	3.00	1.750	0.560	0.620	\$137.07
Two Braids:								
600 AMP								
SC-B2F12	12	1.380	0.350	2.50	1.000	0.410	0.750	\$99.66
SC-B2F12N	12	1.380	0.380	3.00	1.750	0.560	0.620	\$99.66
SC-B2F18	18	1.380	0.350	2.50	1.000	0.410	0.750	\$121.47
SC-B2F18N	18	1.380	0.380	3.00	1.750	0.560	0.620	\$121.47
SC-B2F24	24	1.380	0.350	2.50	1.000	0.410	0.750	\$143.28
SC-B2F24N	24	1.380	0.380	3.00	1.750	0.560	0.620	\$143.28
SC-B2F36	36	1.380	0.350	2.50	1.000	0.410	0.750	\$186.90
SC-B2F36N	36	1.380	0.380	3.00	1.750	0.560	0.620	\$186.90
SC-B2F48	48	1.380	0.350	2.50	1.000	0.410	0.750	\$230.51
SC-B2F48N	48	1.380	0.380	3.00	1.750	0.560	0.620	\$230.51
Three Braids:								
900 AMP								
SC-B3F12	12	1.380	0.590	2.50	1.000	0.410	0.750	\$137.09
SC-B3F12N	12	1.380	0.590	3.00	1.750	0.560	0.620	\$139.36
SC-B3F18	18	1.380	0.590	2.50	1.000	0.410	0.750	\$169.80
SC-B3F18N	18	1.380	0.590	3.00	1.750	0.560	0.620	\$172.07
SC-B3F24	24	1.380	0.590	2.50	1.000	0.410	0.750	\$202.52
SC-B3F24N	24	1.380	0.590	3.00	1.750	0.560	0.620	\$204.78
SC-B3F36	36	1.380	0.590	2.50	1.000	0.410	0.750	\$267.94
SC-B3F36N	36	1.380	0.590	3.00	1.750	0.560	0.620	\$270.21
SC-B3F48	48	1.380	0.590	2.50	1.000	0.410	0.750	\$333.37
SC-B3F48N	48	1.380	0.590	3.00	1.750	0.560	0.620	\$335.64
Four Braids:								
1000 AMP								
SC-B4F12	12	1.380	0.870	2.50	1.000	0.410	0.750	\$167.70
SC-B4F12N	12	1.380	0.870	3.00	1.750	0.560	0.620	\$169.97
SC-B4F18	18	1.380	0.870	2.50	1.000	0.410	0.750	\$211.32
SC-B4F18N	18	1.380	0.870	3.00	1.750	0.560	0.620	\$213.59
SC-B4F24	24	1.380	0.870	2.50	1.000	0.410	0.750	\$254.94
SC-B4F24N	24	1.380	0.870	3.00	1.750	0.560	0.620	\$257.21
SC-B4F36	36	1.380	0.870	2.50	1.000	0.410	0.750	\$342.18

SC-B4F36N	36	1.380	0.870	3.00	1.750	0.560	0.620	\$344.44
SC-B4F48	48	1.380	0.870	2.50	1.000	0.410	0.750	\$429.41
SC-B4F48N	48	1.380	0.870	3.00	1.750	0.560	0.620	\$431.68

AMP RATING WILL VARY WITH AMBIENT CONDITIONS, ORIENTATION OF THE BRAID AND OTHER SERVICE CONDITIONS.
ALL SIZES ARE LISTED TO UL 467 GROUNDING AND BONDING EQUIPMENT STANDARDS



1-800-394-4804

BG Series

FLEXBRAID SPECIFICATIONS and PRICING								
<i>(Please see illustration below for reference)</i>								
Part Number	LL Length	Pad Dimensions			Hole Diameter and Spacing			Price
		W Width	T Thick	D Length	E Spacing	K Dia.	G Edge	
Single Braid:								
510 AMP								
SC-BG12	12	1.630	0.364	2.50	1.000	0.410	0.750	\$89.05
SC-BG12N	12	1.630	0.364	3.00	1.750	0.560	0.620	\$89.05
SC-BG18	18	1.630	0.364	2.50	1.000	0.410	0.750	\$104.15
SC-BG18N	18	1.630	0.364	3.00	1.750	0.560	0.620	\$104.15
SC-BG24	24	1.630	0.364	2.50	1.000	0.410	0.750	\$119.25
SC-BG24N	24	1.630	0.364	3.00	1.750	0.560	0.620	\$119.25
SC-BG36	36	1.630	0.364	2.50	1.000	0.410	0.750	\$149.45
SC-BG36N	36	1.630	0.364	3.00	1.750	0.560	0.620	\$149.45
SC-BG48	48	1.630	0.364	2.50	1.000	0.410	0.750	\$179.66
SC-BG48N	48	1.630	0.364	3.00	1.750	0.560	0.620	\$179.66
Two Braids:								
875 AMP								
SC-B2G12	12	1.630	0.500	2.50	1.000	0.410	0.750	\$135.37
SC-B2G12N	12	1.630	0.500	3.00	1.750	0.560	0.620	\$137.64
SC-B2G18	18	1.630	0.500	2.50	1.000	0.410	0.750	\$165.58
SC-B2G18N	18	1.630	0.500	3.00	1.750	0.560	0.620	\$167.84

SC-B2G24	24	1.630	0.500	2.50	1.000	0.410	0.750	\$195.78
SC-B2G24N	24	1.630	0.500	3.00	1.750	0.560	0.620	\$198.04
SC-B2G36	36	1.630	0.500	2.50	1.000	0.410	0.750	\$256.18
SC-B2G36N	36	1.630	0.500	3.00	1.750	0.560	0.620	\$258.45
SC-B2G48	48	1.630	0.500	2.50	1.000	0.410	0.750	\$316.58
SC-B2G48N	48	1.630	0.500	3.00	1.750	0.560	0.620	\$318.85
Three Braids:								
1000 AMP								
SC-B3G12	12	1.630	0.690	2.50	1.000	0.410	0.750	\$171.91
SC-B3G12N	12	1.630	0.690	3.00	1.750	0.560	0.620	\$174.18
SC-B3G18	18	1.630	0.690	2.50	1.000	0.410	0.750	\$217.22
SC-B3G18N	18	1.630	0.690	3.00	1.750	0.560	0.620	\$219.48
SC-B3G24	24	1.630	0.690	2.50	1.000	0.410	0.750	\$262.52
SC-B3G24N	24	1.630	0.690	3.00	1.750	0.560	0.620	\$264.78
SC-B3G36	36	1.630	0.690	2.50	1.000	0.410	0.750	\$353.12
SC-B3G36N	36	1.630	0.690	3.00	1.750	0.560	0.620	\$355.39
SC-B3G48	48	1.630	0.690	2.50	1.000	0.410	0.750	\$443.73
SC-B3G48N	48	1.630	0.690	3.00	1.750	0.560	0.620	\$445.99
Four Braids:								
1200 AMP								
SC-B4G12	12	1.630	1.000	2.50	1.000	0.410	0.750	\$212.05
SC-B4G12N	12	1.630	1.000	3.00	1.750	0.560	0.620	\$214.32
SC-B4G18	18	1.630	1.000	2.50	1.000	0.410	0.750	\$272.45
SC-B4G18N	18	1.630	1.000	3.00	1.750	0.560	0.620	\$274.72
SC-B4G24	24	1.630	1.000	2.50	1.000	0.410	0.750	\$332.86
SC-B4G24N	24	1.630	1.000	3.00	1.750	0.560	0.620	\$335.12
SC-B4G36	36	1.630	1.000	2.50	1.000	0.410	0.750	\$453.66
SC-B4G36N	36	1.630	1.000	3.00	1.750	0.560	0.620	\$455.93
SC-B4G48	48	1.630	1.000	2.50	1.000	0.410	0.750	\$574.47
SC-B4G48N	48	1.630	1.000	3.00	1.750	0.560	0.620	\$576.74

AMP RATING WILL VARY WITH AMBIENT CONDITIONS, ORIENTATION OF THE BRAID AND OTHER SERVICE CONDITIONS.
ALL SIZES ARE LISTED TO UL 467 GROUNDING AND BONDING EQUIPMENT STANDARDS



Wire Bundle Size

